



## GLS (K311acetylation) Antibody

#58008

**Number:** 58008

**Amount:** 100µg/100µl

**Accession No. :**Swiss-Prot: O94925

**Form of Antibody:** Rabbit IgG in phosphate buffered saline (without Mg<sup>2+</sup> and Ca<sup>2+</sup>), pH 7.4, 150mM NaCl, 0.02% sodium azide and 50% glycerol.

**Storage/Stability:** Store at -20°C/1 year

**Immunogen:** The antiserum was produced against synthesized Peptide sequence around acetylation site of lysine 311 derived from Human GLS.

**Purification:** The antibody was produced by immunizing rabbits with synthetic acetylated peptide and KLH conjugates. Antibodies were purified by affinity-chromatography using epitope-specific acetylated peptide. Non-acetyl specific antibodies were removed by chromatography using non-acetylpeptide.

**Specificity/Sensitivity:**GLS(K311acetylation) antibody detects endogenous levels of GLS only when acetylated at lysine 311 .

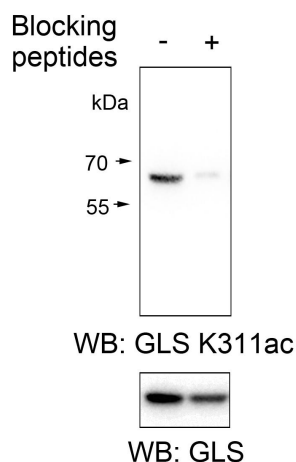
**Reactivity:** Human, Mouse, Rat

### Applications:

Predicted MW: 65 KD

WB :1:500~1:1000 IHC:1:50-100

Western blot analysis of extracts from PANC-1 cells, using GLS K311 acetylation and GLS antibodies in the absence or presence of K311ac peptide.



[www.swbio.com](http://www.swbio.com)

**Order :** [order@swbio.com](mailto:order@swbio.com)

**Technical :** [tech@swbio.com](mailto:tech@swbio.com)

**Background** : GLS is an phosphate-activated amidohydrolase that catalyzes the hydrolysis of glutamine to glutamate and ammonia. This protein is primarily expressed in the brain and kidney plays an essential role in generating energy for metabolism, synthesizing the brain neurotransmitter glutamate and maintaining acid-base balance in the kidney. Alternate splicing results in multiple transcript variants.