



E2F-3 (Acetyl-Lys168) Antibody

#15270

Catalog Number: 15270-1, 15270-2

Amount: 50µg/50µl, 100µg/100µl

Swiss-Prot No. : O00716

Form of Antibody: Rabbit IgG in phosphate buffered saline (without Mg²⁺ and Ca²⁺), pH 7.4, 150mM NaCl, 0.02% sodium azide and 50% glycerol.

Storage/Stability: Store at -20°C/1 year

Immunogen: The antiserum was produced against synthesized peptide derived from Human E2F3 around the acetylation site of Lysine168.

Purification: The antibody was affinity-purified from rabbit antiserum by affinity-chromatography using epitope-specific immunogen.

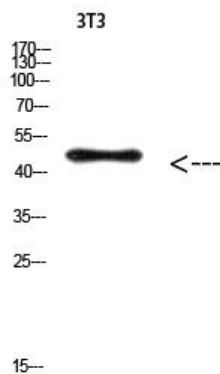
Specificity/Sensitivity: E2F3 (Acetyl- Lys168) Antibody detects endogenous levels of Tau protein only when acetylated at Lys168.

Reactivity: Human

Applications:

Predicted MW: 50kd

WB: 1:500~1:2000



Western Blot analysis of 3T3 cells using
E2F3 (Acetyl- Lys168) Antibody

Background : The protein encoded by this gene is a member of the E2F family of transcription factors. The E2F family plays a crucial role in the control of cell cycle and action of tumor suppressor proteins and is also a target of the transforming proteins of small DNA tumor viruses.