



E2F-1 (Acetyl-Lys120) Antibody

#15273

Catalog Number: 15273-1, 15273-2

Amount: 50µg/50µl, 100µg/100µl

Swiss-Prot No. :Q01094

Form of Antibody: Rabbit IgG in phosphate buffered saline (without Mg²⁺ and Ca²⁺), pH 7.4, 150mM NaCl, 0.02% sodium azide and 50% glycerol.

Storage/Stability: Store at -20°C/1 year

Immunogen: The antiserum was produced against synthesized peptide derived from Human E2F1 around the acetylation site of Lysine120.

Purification: The antibody was affinity-purified from rabbit antiserum by affinity-chromatography using epitope-specific immunogen.

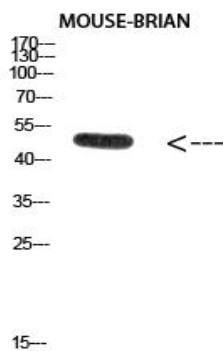
Specificity/Sensitivity: E2F1 (Acetyl- Lys120) Antibody detects endogenous levels of Tau protein only when acetylated at Lys120.

Reactivity: Human

Applications:

Predicted MW: 47kd

WB:1:500~1:2000



Western Blot analysis of MOUSE-BRIAN cells using

E2F1 (Acetyl- Lys120) Antibody

Background : The protein encoded by this gene is a member of the E2F family of transcription factors. The E2F family plays a crucial role in the control of cell cycle and action of tumor suppressor proteins and is also a target of the transforming proteins of small DNA tumor viruses.