



HSP70 (Acetyl Lys246) Antibody

#15163

Catalog Number: 15163-1, 15163-2

Amount: 50µg/50µl, 100µg/100µl

Swiss-Prot No. : P08107

Form of Antibody: Rabbit IgG in phosphate buffered saline (without Mg²⁺ and Ca²⁺), pH 7.4, 150mM NaCl, 0.02% sodium azide and 50% glycerol.

Storage/Stability: Store at -20°C/1 year

Immunogen: The antiserum was produced against synthesized peptide derived from Human HSP70 around the acetylation site of Lysine246.

Purification: The antibody was affinity-purified from rabbit antiserum by affinity-chromatography using epitope-specific immunogen.

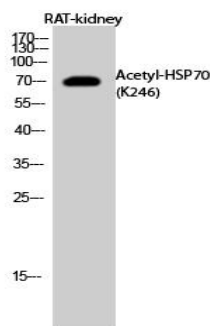
Specificity/Sensitivity: HSP70 (Acetyl Lys246) Antibody detects endogenous levels of HSP70 protein only when acetylated at Lys246.

Reactivity: Human

Applications:

Predicted MW: 70kd

WB: 1:500~1:2000



Western Blot analysis of RAT-kidney cells using

Acetyl-HSP70 (K246) Antibody

Background : This intronless gene encodes a 70kDa heat shock protein which is a member of the heat shock protein 70 family. In conjunction with other heat shock proteins, this protein stabilizes existing proteins against aggregation and mediates the folding of newly translated proteins in the cytosol and in organelles. It is also involved in the ubiquitin-proteasome pathway through interaction with the AU-rich element RNA-binding protein 1. The gene is located in the major histocompatibility complex class III region, in a cluster with two closely related genes which encode similar proteins.