



## E2F-4 (Acetyl-Lys96) Antibody

#15266

**Catalog Number:** 15266-1, 15266-2

**Amount:** 50µg/50µl, 100µg/100µl

**Swiss-Prot No. :**Q16254

**Form of Antibody:** Rabbit IgG in phosphate buffered saline (without Mg<sup>2+</sup> and Ca<sup>2+</sup>), pH 7.4, 150mM NaCl, 0.02% sodium azide and 50% glycerol.

**Storage/Stability:** Store at -20°C/1 year

**Immunogen:** The antiserum was produced against synthesized peptide derived from Human E2F4 around the acetylation site of Lysine96.

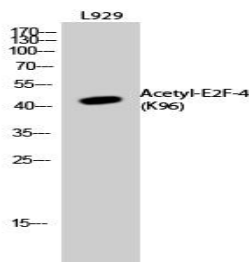
**Purification:** The antibody was affinity-purified from rabbit antiserum by affinity-chromatography using epitope-specific immunogen.

**Specificity/Sensitivity:** E2F-4 (Acetyl-Lys96) Antibody detects endogenous levels of E2F-4 protein only when acetylated at Lys96.

**Reactivity:** Human, Mouse, Rat

### Applications:

Predicted MW: 43kd      WB: 1:500~1:2000



Western Blot analysis of L929 cells using

Acetyl-E2F-4 (K96) Polyclonal Antibody.

### Background :

E2F4 Transcription activator that binds DNA cooperatively with DP proteins through the E2 recognition site, 5'-TTTC[CG]CGC- 3' found in the promoter region of a number of genes whose products are involved in cell cycle regulation or in DNA replication. The DRTF1/E2F complex functions in the control of cell-cycle progression from G1 to S phase. E2F-4 binds with high affinity to RBL1 and RBL2. In some instances, can also bind RB protein. Belongs to the E2F/DP family. Component of the DRTF1/E2F transcription factor complex. Binds cooperatively with DP-1 to E2F sites