



## ATF-5 (Acetyl-Lys29) Antibody

#15301

**Catalog Number:** 15301-1, 15301-2

**Amount:** 50µg/50µl, 100µg/100µl

**Swiss-Prot No. :** Q9Y2D1

**Form of Antibody:** Rabbit IgG in phosphate buffered saline (without Mg<sup>2+</sup> and Ca<sup>2+</sup>), pH 7.4, 150mM NaCl, 0.02% sodium azide and 50% glycerol.

**Storage/Stability:** Store at -20°C/1 year

**Immunogen:** The antiserum was produced against synthesized peptide derived from Human ATF5 around the acetylation site of Lysine29.

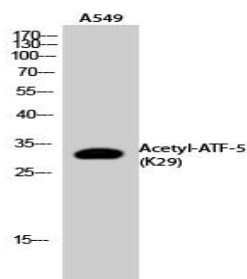
**Purification:** The antibody was affinity-purified from rabbit antiserum by affinity-chromatography using epitope-specific immunogen.

**Specificity/Sensitivity:** ATF-5 (Acetyl-Lys29) Antibody detects endogenous levels of ATF-5 protein only when acetylated at Lys29.

**Reactivity:** Human, Mouse, Rat

### Applications:

Predicted MW: 30kd      WB: 1:500~1:2000



Western Blot analysis of A549 cells using

Acetyl-ATF-5 (K29) Polyclonal Antibody.

### Background :

Transcriptional activator which binds the cAMP response element (CRE) (consensus: 5'-GTGACGT[AC][AG]-3'), a sequence present in many viral and cellular promoters and blocks the differentiation of neuroprogenitor cells into neurons. Its transcriptional activity is enhanced by CCND3 and slightly inhibited by CDK4.