



FOXA1 α / β / γ
(Acetyl-Lys264/253/211) Antibody

#15302

Catalog Number: 15302-1, 15302-2

Amount: 50 μ g/50 μ l, 100 μ g/100 μ l

Swiss-Prot No. : P55317

Form of Antibody: Rabbit IgG in phosphate buffered saline (without Mg²⁺ and Ca²⁺), pH 7.4, 150mM NaCl, 0.02% sodium azide and 50% glycerol.

Storage/Stability: Store at -20°C/1 year

Immunogen: The antiserum was produced against synthesized peptide derived from Human FOXA1 $\alpha/\beta/\gamma$ around the acetylation site of Lysine264/253/211.

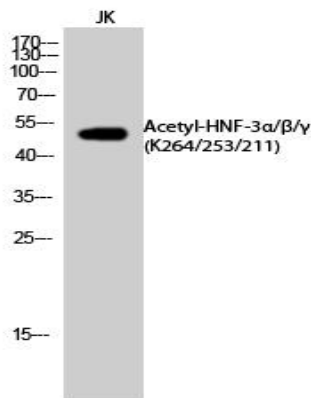
Purification: The antibody was affinity-purified from rabbit antiserum by affinity-chromatography using epitope-specific immunogen.

Specificity/Sensitivity: FOXA1 $\alpha/\beta/\gamma$ (Acetyl-Lys264/253/211) Antibody detects endogenous levels of FOXA1 $\alpha/\beta/\gamma$ protein only when acetylated at Lys264/253/211.

Reactivity: Human, Mouse, Rat

Applications:

Predicted MW: 50kd WB: 1:500~1:2000



Western Blot analysis of JK cells using

FOXA1 α / β / γ (K264/253/211) Antibody

Background :