



## FH (Phospho-Thr236) Antibody

#12261

**Catalog Number:** 12261-1, 12261-2

**Amount:** 50µg/50µl, 100µg/100µl

**Swiss-Prot No. :** P07954

**Form of Antibody:** Rabbit IgG in phosphate buffered saline (without Mg<sup>2+</sup> and Ca<sup>2+</sup>), pH 7.4, 150mM NaCl, 0.02% sodium azide and 50% glycerol.

**Storage/Stability:** Store at -20°C/1 year

**Immunogen:** The antiserum was produced against synthesized phosphopeptide derived from Human FH around the phosphorylation site of threonine 236.

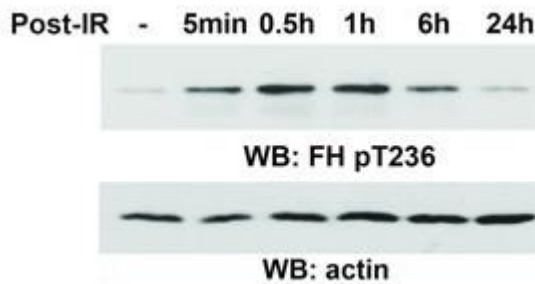
**Purification:** The antibody was affinity-purified from rabbit antiserum by affinity-chromatography using epitope-specific phosphopeptide. The antibody against non-phosphopeptide was removed by chromatography using non-phosphopeptide corresponding to the phosphorylation site.

**Specificity/Sensitivity:** FH (Phospho-Thr236) antibody detects endogenous levels of FH only when phosphorylated at threonine 236.

**Reactivity:** Human, Mouse, Rat

### Applications:

Predicted MW: 54 kd      WB : 1:500~1:1000



Western blot analysis of extracts from Thymidine double block-synchronized U2OS cells (G1 phase) using FH (Phospho-Thr236)

### Background :