



Bcl-10 Antibody

#25523

Catalog Number: 25523-1, 25523-2

Amount: 50µg/50µl, 100µg/100µl

Swiss-Prot No. : O95999

Form of Antibody: Rabbit IgG in phosphate buffered saline (without Mg²⁺ and Ca²⁺), pH 7.4, 150mM NaCl, 0.02% sodium azide and 50% glycerol.

Storage/Stability: Store at -20°C/1 year

Immunogen: .Synthesized peptide derived from the Internal region of human Bcl-10.

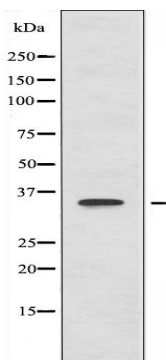
Purification: The antibody was affinity-purified from rabbit antiserum by affinity-chromatography using epitope-specific immunogen.

Specificity/Sensitivity: Bcl-10 Antibody detects endogenous levels of total Bcl-10

Reactivity: Human, Mouse, Rat

Applications:

Predicted MW: 36kd WB: 1:500-2000 IHC: 1:100-300



Western blot analysis of extracts from K562 cells, using BCL10 antibody.

Background :

Involved in adaptive immune response . Promotes apoptosis, pro-caspase-9 maturation and activation of NF-kappa-B via NIK and IKK. May be an adapter protein between upstream TNFR1-TRADD-RIP complex and the downstream NIK-IKK-IKAP complex. Is a substrate for MALT1 .