



DDX6 Antibody

#25518

Catalog Number: 25518-1, 25518-2

Amount: 50µg/50µl, 100µg/100µl

Swiss-Prot No. : P26196

Form of Antibody: Rabbit IgG in phosphate buffered saline (without Mg²⁺ and Ca²⁺), pH 7.4, 150mM NaCl, 0.02% sodium azide and 50% glycerol.

Storage/Stability: Store at -20°C/1 year

Immunogen: .Synthesized peptide derived from the Internal region of human DDX6.

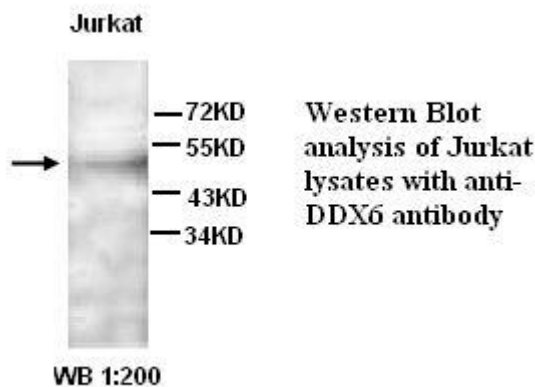
Purification: The antibody was affinity-purified from rabbit antiserum by affinity-chromatography using epitope-specific immunogen.

Specificity/Sensitivity: DDX6 Antibody detects endogenous levels of total DDX6

Reactivity: Human, Mouse, Rat

Applications:

Predicted MW: 54kd WB: 1:500-2000



Background :

This gene encodes a member of the DEAD box protein family. The protein is an RNA helicase found in P-bodies and stress granules, and functions in translation suppression and mRNA degradation. It is required for microRNA-induced gene silencing. Multiple alternatively spliced variants, encoding the same protein, have been identified.