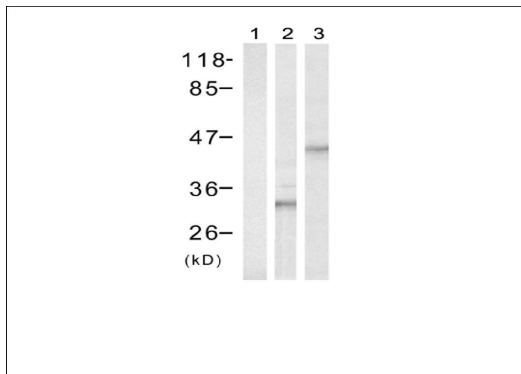




His-Tag Polyclonal Antibody

#T520

Catalog Number: T520**Amount:** 50µg/50µl 100µg/100µl**Form of Antibody:** Rabbit IgG in phosphate buffered saline (without Mg²⁺ and Ca²⁺), pH 7.4, 150mM NaCl, 0.02% sodium azide and 50% glycerol.**Storage/Stability:** Store at -20°C/1 year**Immunogen:** The antiserum was produced by immunizing rabbit with a synthesized peptide containing the His epitope (H-H-H-H-H-H)**Purification:** The antibody was affinity-purified from rabbit antiserum by affinity-chromatography using epitope-specific immunogen.**Specificity/Sensitivity:** His-Tag Antibody detects exogenously expressed His-Tagged proteins in cells. The antibody recognizes the His-tag fused to either the amino- or carboxy-terminus of targeted proteins in transfected mammalian cells.**Reactivity:** All**Applications:** WB:1:500~1:1000

Western blot analysis of extract from control 293 cells (Lane 1) or transfected with His-tagged S6 (Lane 2) and transfected with His-tagged CREB (Lane 3) using His-Tag polyclonal antibody .

References:

Terpe K. et al. (2003) Appl Microbiol Biotechnol; 60(5):523-533

Xu L. et al. (2006) Cell Mol Immunol; 3(2):139-143.

Els Conrath, K., et al. (2001) J. Biol. Chem. 276: 7346-7350.