



p21 Antibody

#24361

Catalog Number: 24361-1, 24361-2

Amount: 50µg/50µl, 100µg/100µl

Swiss-Prot No. : P38936

Form of Antibody: Rabbit IgG in phosphate buffered saline (without Mg²⁺ and Ca²⁺), pH 7.4, 150mM NaCl, 0.02% sodium azide and 50% glycerol.

Storage/Stability: Store at -20°C/1 year

Immunogen: The antiserum was produced against synthesized peptide derived from Human p21

Purification: The antibody was affinity-purified from rabbit antiserum by affinity-chromatography using epitope-specific immunogen.

Specificity/Sensitivity: p21 Antibody detects endogenous levels of total p21 protein

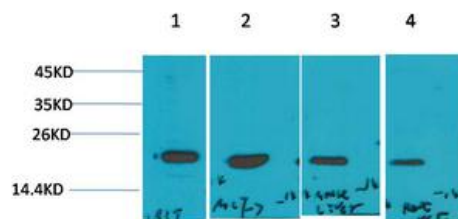
Reactivity: Human, Mouse, Rat

Applications:

Predicted MW: 26kd

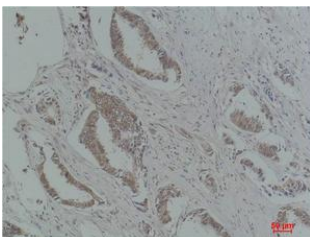
WB: 1:500-2000

IHC: 1:50-100



Western blot analysis of 1) 293T, 2) MCF7,

3) Mouse Liver Tissue, 4) Rat Liver Tissue using p21 Polyclonal Antibody



Immunohistochemical analysis of paraffin-embedded Human Breast Carcinoma using p21 Polyclonal Antibody.

Background : This gene encodes a potent cyclin-dependent kinase inhibitor. The encoded protein binds to and inhibits the activity of cyclin-CDK2 or -CDK4 complexes, and thus functions as a regulator of cell cycle progression at G1. The expression of this gene is tightly controlled by the tumor suppressor protein p53, through which this protein mediates the p53-dependent cell cycle G1 phase arrest in response to a variety of stress stimuli.