



## VEGF-A Antibody

#25516

**Catalog Number:** 25516-1, 25516-2

**Amount:** 50µg/50µl, 100µg/100µl

**Swiss-Prot No. :** P15692

**Form of Antibody:** Rabbit IgG in phosphate buffered saline (without Mg<sup>2+</sup> and Ca<sup>2+</sup>), pH 7.4, 150mM NaCl, 0.02% sodium azide and 50% glycerol.

**Storage/Stability:** Store at -20°C/1 year

**Immunogen:** .Synthesized peptide derived from the Internal region of human VEGF-A.

**Purification:** The antibody was affinity-purified from rabbit antiserum by affinity-chromatography using epitope-specific immunogen.

**Specificity/Sensitivity:** VEGF-A Antibody detects endogenous levels of total VEGF-A

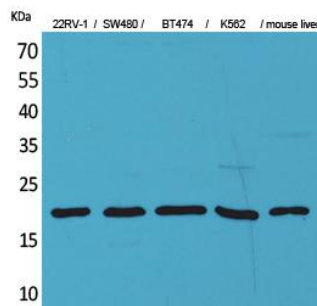
**Reactivity:** Human

### Applications:

Predicted MW:93kd

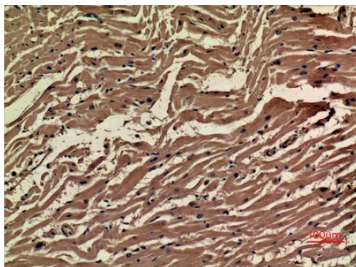
WB:1:500-2000

IHC:1:100-300



Western Blot analysis of 22RV-1, SW480, BT474, K562,

mouse liver cells using VEGF-A Polyclonal Antibody.



Immunohistochemical analysis of paraffin-embedded human-heart

### Background :