



LKB1 (Phospho-Ser428) Antibody

#14213

Catalog Number: 14213-1, 14213-2

Amount: 50µg/50µl, 100µg/100µl

Swiss-Prot No. :Q15831

Form of Antibody: Rabbit IgG in phosphate buffered saline (without Mg²⁺ and Ca²⁺), pH 7.4, 150mM NaCl, 0.02% sodium azide and 50% glycerol.

Storage/Stability: Store at -20°C/1 year

Immunogen: The antiserum was produced against synthesized phosphopeptide derived from Human LKB1 around the phosphorylation site of Serine428

Purification: The antibody was affinity-purified from rabbit antiserum by affinity-chromatography using epitope-specific immunogen.

Specificity/Sensitivity: LKB1(Phospho-Ser428)Antibody detects endogenous levels of LKB1 only when phosphorylated at Serine428

Reactivity: Human, Mouse, Rat

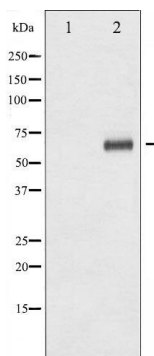
Applications:

Predicted MW: 65kd

WB: 1:500~1:2000

IHC: 1:50-200

IF/ICC: 1:100-500



Western blot analysis of LKB1 phosphorylation expression in PMA treated HeLa whole cell lysates, The lane on the left is treated with the antigen-specific peptide.

Background : ubiquitously expressed kinase of the CAMKL family with a tumor suppressor activity. Phosphorylates AGS3 (activator of G-protein signaling 3) GPR domains, regulating the interaction of GPR-containing proteins with G-proteins. Strongest expression in testis and fetal liver. Mutations in LKB1 lead to the Peutz-Jeghers cancer syndrome.