



## LKB1 (Phospho-Thr189) Antibody

#14214

**Catalog Number:** 14214-1, 14214-2

**Amount:** 50µg/50µl, 100µg/100µl

**Swiss-Prot No. :**Q15831

**Form of Antibody:** Rabbit IgG in phosphate buffered saline (without Mg<sup>2+</sup> and Ca<sup>2+</sup>), pH 7.4, 150mM NaCl, 0.02% sodium azide and 50% glycerol.

**Storage/Stability:** Store at -20°C/1 year

**Immunogen:** The antiserum was produced against synthesized phosphopeptide derived from Human LKB1 around the phosphorylation site of Threonine189

**Purification:** The antibody was affinity-purified from rabbit antiserum by affinity-chromatography using epitope-specific immunogen.

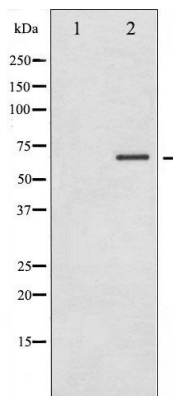
**Specificity/Sensitivity:** LKB1(Phospho-Thr189)Antibody detects endogenous levels of LKB1 only when phosphorylated at Threonine189

**Reactivity:** Human

### Applications:

Predicted MW: 65kd

WB:1:500~1:2000



Western blot analysis of LKB1 phosphorylation expression in PMA treated NIH-3T3 whole cell lysates, The lane on the left is treated with the antigen-specific peptide.

**Background :** ubiquitously expressed kinase of the CAMKL family with a tumor suppressor activity. Phosphorylates AGS3 (activator of G-protein signaling 3) GPR domains, regulating the interaction of GPR-containing proteins with G-proteins. Strongest expression in testis and fetal liver. Mutations in LKB1 lead to the Peutz-Jeghers cancer syndrome.