



SHP-2 (Phospho-Tyr542) Antibody

#14210

Catalog Number: 14210-1, 14210-2

Amount: 50µg/50µl, 100µg/100µl

Swiss-Prot No. :Q06124

Form of Antibody: Rabbit IgG in phosphate buffered saline (without Mg²⁺ and Ca²⁺), pH 7.4, 150mM NaCl, 0.02% sodium azide and 50% glycerol.

Storage/Stability: Store at -20°C/1 year

Immunogen: The antiserum was produced against synthesized phosphopeptide derived from Human SHP-2 around the phosphorylation site of Tyrosine 542

Purification: The antibody was affinity-purified from rabbit antiserum by affinity-chromatography using epitope-specific immunogen.

Specificity/Sensitivity: SHP-2(Phospho-Tyr542)Antibody detects endogenous levels of SHP-2 only when phosphorylated at Tyrosine 542

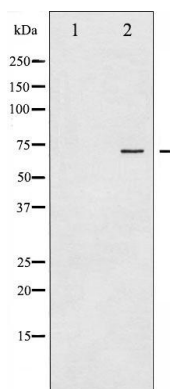
Reactivity: Human, Mouse, Rat

Applications:

Predicted MW: 70kd

WB: 1:500~1:2000

IHC: 1:50-200



Western blot analysis of SHP-2 phosphorylation expression in A431 whole cell lysates. The lane on the left is treated with the antigen-specific peptide.

Background :

SHP-2 is a SH2-containing ubiquitously expressed tyrosine-specific protein phosphatase. It participates in signaling events downstream of receptors for growth factors, cytokines, hormones, antigens and extracellular matrices in the control of cell growth, differentiation, migration, and death.