



RelB(Phospho-Ser552) Antibody

#14208

Catalog Number: 14208-1, 14208-2

Amount: 50µg/50µl, 100µg/100µl

Swiss-Prot No. :Q01201

Form of Antibody: Rabbit IgG in phosphate buffered saline (without Mg²⁺ and Ca²⁺), pH 7.4, 150mM NaCl, 0.02% sodium azide and 50% glycerol.

Storage/Stability: Store at -20°C/1 year

Immunogen: The antiserum was produced against synthesized phosphopeptide derived from Human RelB around the phosphorylation site of Serine552

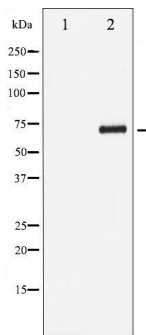
Purification: The antibody was affinity-purified from rabbit antiserum by affinity-chromatography using epitope-specific immunogen.

Specificity/Sensitivity: RelB(Phospho-Ser552)Antibody detects endogenous levels of RelB only when phosphorylated at Serine552

Reactivity: Human, Mouse, Rat

Applications:

Predicted MW: 70kd WB:1:500~1:2000 IHC:1:50-200



Western blot analysis of RelB phosphorylation expression in HepG2 whole cell lysates, The lane on the left is treated with the antigen-specific peptide.

Background :

RelB a transcription factor of the nuclear factor-kappaB (NFkB) transcription complex. Stimulates promoter activity in the presence NFkB1/NFkB-p50. Plays role in regulation of apoptosis in hepatocellular carcinoma through activation of downstream target genes.