

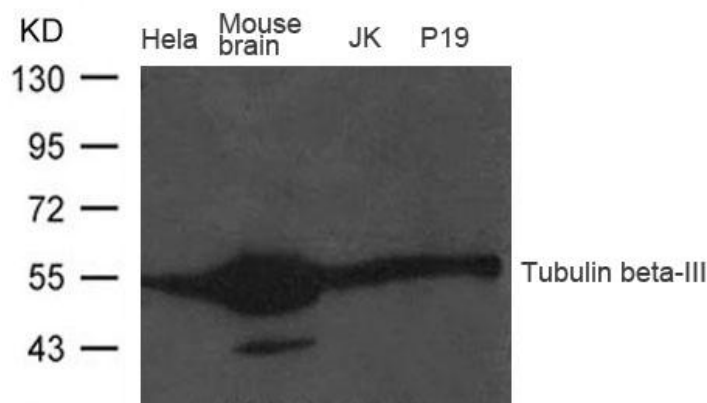
**Signalway**

TUBB3 Antibody

#24355

Catalog Number: 24355-1, 24355-2**Amount:** 50µg/50µl, 100µg/100µl**Swiss-Prot No. :**Q13509**Form of Antibody:** Rabbit IgG in phosphate buffered saline (without Mg²⁺ and Ca²⁺), pH 7.4, 150mM NaCl, 0.02% sodium azide and 50% glycerol.**Storage/Stability:** Store at -20°C/1 year**Immunogen:** Peptide sequence around aa.442~446(E-E-S-E-A) derived from Human Tubulin b-III.**Purification:** The antibody was affinity-purified from rabbit antiserum by affinity-chromatography using epitope-specific immunogen.**Specificity/Sensitivity:** TUBB3 Antibody detects endogenous levels of total TUBB3**Reactivity:** Human, Mouse, Rat**Applications:**

Predicted MW:55kd WB:1:500-2000

**Background :**

Tubulin is the major constituent of microtubules. It binds two moles of GTP, one at an exchangeable site on the beta chain and one at a non-exchangeable site on the alpha-chain. TUBB3 plays a critical role in proper axon guidance and maintenance.