



PHB1 Antibody

#24347

Catalog Number: 24347-1, 24347-2

Amount: 50µg/50µl, 100µg/100µl

Swiss-Prot No. : P35232

Form of Antibody: Rabbit IgG in phosphate buffered saline (without Mg²⁺ and Ca²⁺), pH 7.4, 150mM NaCl, 0.02% sodium azide and 50% glycerol.

Storage/Stability: Store at -20°C/1 year

Immunogen: The antiserum was produced against synthesized peptide derived from Human PHB1

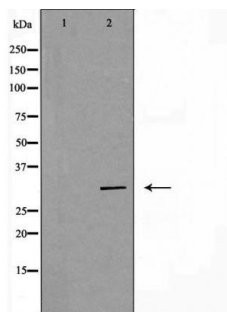
Purification: The antibody was affinity-purified from rabbit antiserum by affinity-chromatography using epitope-specific immunogen.

Specificity/Sensitivity: PHB1 Antibody detects endogenous levels of total PHB1

Reactivity: Human, Mouse, Rat

Applications:

Predicted MW: 30kd WB: 1:500-2000 IHC: 1:50-200



Western blot analysis of extracts of various cell lines, using PHB antibody.

Background : The prohibitins, called PHB1 and PHB2, are highly conserved proteins that are present in multiple compartments in eukaryotic cells. PHB1 is 30kDa tumor suppressor protein involved in cell cycle control . PHB1 has been found in mitochondria, the nucleus and the plasma membrane, as well as extracellularly in circulation . In mitochondria prohibitins mainly exist as membrane-bound ring complexes and function as chaperones maintaining mitochondrial protein stability during protein synthesis and transportation . In the nucleus prohibitins interact with transcription factors such as Rb and p53 to regulate target gene transcription . Extracellular prohibitin can bind and activate C3 to enhance complement activation .