



p21 Cip1 Antibody

#24345

Catalog Number: 24345-1, 24345-2

Amount: 50µg/50µl, 100µg/100µl

Swiss-Prot No. : P38936

Form of Antibody: Rabbit IgG in phosphate buffered saline (without Mg²⁺ and Ca²⁺), pH 7.4, 150mM NaCl, 0.02% sodium azide and 50% glycerol.

Storage/Stability: Store at -20°C/1 year

Immunogen: The antiserum was produced against synthesized peptide derived from Human p21 Cip1

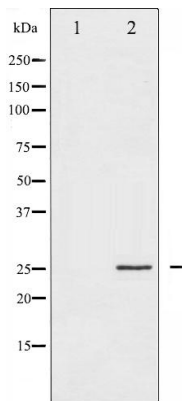
Purification: The antibody was affinity-purified from rabbit antiserum by affinity-chromatography using epitope-specific immunogen.

Specificity/Sensitivity: p21 Cip1 Antibody detects endogenous levels of total p21 Cip1

Reactivity: Human, Mouse, Rat

Applications:

Predicted MW: 26kd WB: 1:500-2000



Western blot analysis of p21 Cip1 expression in EGF treated HeLa whole cell lysates. The lane on the left is treated with the antigen-specific peptide.

Background : This gene encodes a potent cyclin-dependent kinase inhibitor. The encoded protein binds to and inhibits the activity of cyclin-CDK2 or -CDK4 complexes, and thus functions as a regulator of cell cycle progression at G1. The expression of this gene is tightly controlled by the tumor suppressor protein p53, through which this protein mediates the p53-dependent cell cycle G1 phase arrest in response to a variety of stress stimuli.