



PLCG1 Antibody

#24344

Catalog Number: 24344-1, 24344-2

Amount: 50µg/50µl, 100µg/100µl

Swiss-Prot No. : P19174

Form of Antibody: Rabbit IgG in phosphate buffered saline (without Mg²⁺ and Ca²⁺), pH 7.4, 150mM NaCl, 0.02% sodium azide and 50% glycerol.

Storage/Stability: Store at -20°C/1 year

Immunogen: The antiserum was produced against synthesized peptide derived from Human PLCG1

Purification: The antibody was affinity-purified from rabbit antiserum by affinity-chromatography using epitope-specific immunogen.

Specificity/Sensitivity: PLCG1 Antibody detects endogenous levels of total PLCG1

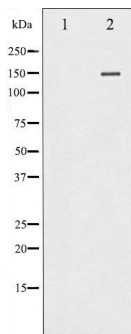
Reactivity: Human, Mouse, Rat

Applications:

Predicted MW: 150kd

WB: 1:500-2000

IHC: 1:50-200



Western blot analysis of PLCG1 expression in EGF treated COS7 whole cell lysates. The lane on the left is treated with the antigen-specific peptide.

Background : The protein encoded by this gene catalyzes the formation of inositol 1,4,5-trisphosphate and diacylglycerol from phosphatidylinositol 4,5-bisphosphate. This reaction uses calcium as a cofactor and plays an important role in the intracellular transduction of receptor-mediated tyrosine kinase activators. For example, when activated by SRC, the encoded protein causes the Ras guanine nucleotide exchange factor RasGRP1 to translocate to the Golgi, where it activates Ras. Also, this protein has been shown to be a major substrate for heparin-binding growth factor 1 (acidic fibroblast growth factor)-activated tyrosine kinase. Two transcript variants encoding different isoforms have been found for this gene.