



Pin1 Antibody

#24343

Catalog Number: 24343-1, 24343-2

Amount: 50µg/50µl, 100µg/100µl

Swiss-Prot No. :Q13526

Form of Antibody: Rabbit IgG in phosphate buffered saline (without Mg²⁺ and Ca²⁺), pH 7.4, 150mM NaCl, 0.02% sodium azide and 50% glycerol.

Storage/Stability: Store at -20°C/1 year

Immunogen: The antiserum was produced against synthesized peptide derived from Human Pin1

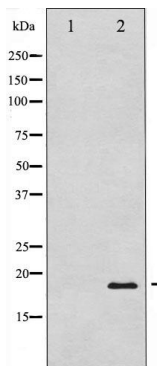
Purification: The antibody was affinity-purified from rabbit antiserum by affinity-chromatography using epitope-specific immunogen.

Specificity/Sensitivity: Pin1 Antibody detects endogenous levels of total Pin1

Reactivity: Human, Mouse, Rat

Applications:

Predicted MW: 18kd WB: 1:500-2000



Western blot analysis of Pin1

expression in COS7 whole cell

lysates, The lane on the left is treated

with the antigen-specific peptide.

Background :

Pin1 is a member of the parvulin family of peptidyl-prolyl isomerases (PPIase), has been implicated in the G2-M transition of the cell cycle. Has two distinct functional domains: an N-terminal WW domain and a C-terminal PPIase domain.