



## ATRIP (Phospho-Ser68) Antibody

**#14216**

**Catalog Number:** 14216-1, 14216-2

**Amount:** 50µg/50µl, 100µg/100µl

**Swiss-Prot No. :**Q8WXE1

**Form of Antibody:** Rabbit IgG in phosphate buffered saline (without Mg<sup>2+</sup> and Ca<sup>2+</sup>), pH 7.4, 150mM NaCl, 0.02% sodium azide and 50% glycerol.

**Storage/Stability:** Store at -20°C/1 year

**Immunogen:** The antiserum was produced against synthesized phosphopeptide derived from Human ATRIP around the phosphorylation site of Serine68

**Purification:** The antibody was affinity-purified from rabbit antiserum by affinity-chromatography using epitope-specific immunogen.

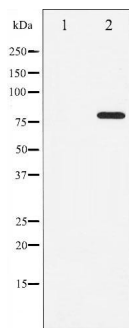
**Specificity/Sensitivity:** ATRIP(Phospho-Ser68)Antibody detects endogenous levels of ATRIP only when phosphorylated at Serine68

**Reactivity:** Human, Mouse, Rat

### Applications:

Predicted MW: 80kd

WB: 1:500~1:2000



Western blot analysis of ATRIP

phosphorylation expression in NIH-3T3

whole cell lysates, The lane on the left is

treated with the antigen-specific

peptide.

### Background :

ATRIP is required for checkpoint signaling after DNA damage. Required for ATR expression, possibly by stabilizing the protein.