



FRS2 (Phospho-Tyr436) Antibody

#14215

Catalog Number: 14215-1, 14215-2

Amount: 50µg/50µl, 100µg/100µl

Swiss-Prot No. :Q8WU20

Form of Antibody: Rabbit IgG in phosphate buffered saline (without Mg²⁺ and Ca²⁺), pH 7.4, 150mM NaCl, 0.02% sodium azide and 50% glycerol.

Storage/Stability: Store at -20°C/1 year

Immunogen: The antiserum was produced against synthesized phosphopeptide derived from Human FRS2 around the phosphorylation site of Tyrosine436

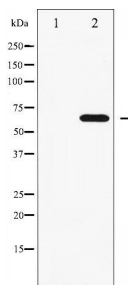
Purification: The antibody was affinity-purified from rabbit antiserum by affinity-chromatography using epitope-specific immunogen.

Specificity/Sensitivity: FRS2(Phospho-Tyr436)Antibody detects endogenous levels of FRS2 only when phosphorylated at Tyrosine436

Reactivity: Human, Mouse

Applications:

Predicted MW: 65kd WB:1:500~1:2000 IHC:1:50-200



Western blot analysis of FRS2

phosphorylation expression in COS7

whole cell lysates, The lane on the left is treated with the antigen-specific peptide.

Background :

FRS2 is an adaptor protein involved in fibroblast growth factor receptor (FGFR) signaling. Plays an important role in linking FGFR and nerve growth factor receptors with Ras/MAPK signaling pathways.