



## EPS15 (Phospho-Tyr849) Antibody

#14141

**Catalog Number:** 14141-1, 14141-2

**Amount:** 50µg/50µl, 100µg/100µl

**Swiss-Prot No. :** P42566

**Form of Antibody:** Rabbit IgG in phosphate buffered saline (without Mg<sup>2+</sup> and Ca<sup>2+</sup>), pH 7.4, 150mM NaCl, 0.02% sodium azide and 50% glycerol.

**Storage/Stability:** Store at -20°C/1 year

**Immunogen:** The antiserum was produced against synthesized phosphopeptide derived from Human eps15 around the phosphorylation site of Tyrosine849

**Purification:** The antibody was affinity-purified from rabbit antiserum by affinity-chromatography using epitope-specific immunogen.

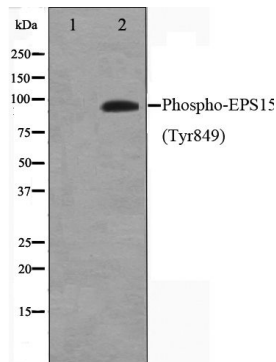
**Specificity/Sensitivity:** Phospho-EPS15 (Tyr849) Antibody detects endogenous levels of EPS15 only when phosphorylated at Tyrosine849

**Reactivity:** Human, Mouse, Rat

### Applications:

Predicted MW: 98kd

WB: 1:500~1:2000



Western blot analysis on HepG2 cell lysate using  
Phospho-EPS15(Tyr849) Antibody

**Background :** This gene encodes a protein that is part of the EGFR pathway. The protein is present at clathrin-coated pits and is involved in receptor-mediated endocytosis of EGF. Notably, this gene is rearranged with the HRX/ALL/MLL gene in acute myelogenous leukemias. Alternate transcriptional splice variants of this gene have been observed but have not been thoroughly characterized.