



ChK2 (Phospho-Thr68) Antibody

#14143

Catalog Number: 14143-1, 14143-2

Amount: 50µg/50µl, 100µg/100µl

Swiss-Prot No. : O96017

Form of Antibody: Rabbit IgG in phosphate buffered saline (without Mg²⁺ and Ca²⁺), pH 7.4, 150mM NaCl, 0.02% sodium azide and 50% glycerol.

Storage/Stability: Store at -20°C/1 year

Immunogen: The antiserum was produced against synthesized phosphopeptide derived from Human ChK2 around the phosphorylation site of Threonine 68

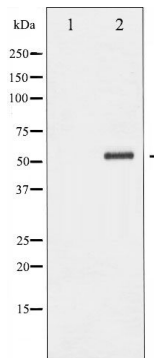
Purification: The antibody was affinity-purified from rabbit antiserum by affinity-chromatography using epitope-specific immunogen.

Specificity/Sensitivity: Phospho-ChK2 (Thr68) Antibody detects endogenous levels of ChK2 only when phosphorylated at Threonine 68

Reactivity: Human, Mouse, Rat

Applications:

Predicted MW: 62kd WB: 1:500~1:2000 IHC: 1:50-200



Western blot analysis of Chk2 phosphorylation expression in UV treated Jurkat whole cell lysates. The lane on the left is treated with the antigen-specific peptide.

Background : In response to DNA damage and replication blocks, cell cycle progression is halted through the control of critical cell cycle regulators. The protein encoded by this gene is a cell cycle checkpoint regulator and putative tumor suppressor.