



#24331

Catalog Number: 24331-1, 24331-2

Amount: 50µg/50µl, 100µg/100µl

Swiss-Prot No. : P01286

Form of Antibody: Rabbit IgG in phosphate buffered saline (without Mg²⁺ and Ca²⁺), pH 7.4, 150mM NaCl, 0.02% sodium azide and 50% glycerol.

Storage/Stability: Store at -20°C/1 year

Immunogen: The antiserum was produced against synthesized peptide derived from Human GHRH

Purification: The antibody was affinity-purified from rabbit antiserum by affinity-chromatography using epitope-specific immunogen.

Specificity/Sensitivity: GHRH Antibody detects endogenous levels of total GHRH

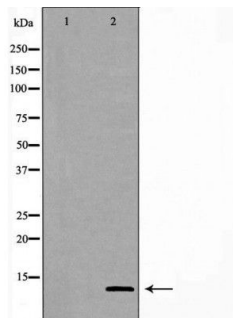
Reactivity: Human, Mouse, Rat

Applications:

Predicted MW: 12kd

WB: 1:500-2000

IF/IHC: 1:50-200



Western blot analysis of GHRH ,The lane on the left is treated with the antigen-specific peptide.

Background :

The activated kinase acts on a variety of targets. Likely to be the GTPase effector that links the Rho-related GTPases to the JNK MAP kinase pathway. Activated by CDC42 and RAC1. Involved in dissolution of stress fibers and reorganization of focal complexes. Involved in regulation of microtubule biogenesis through phosphorylation of TBCB. Activity is inhibited in cells undergoing apoptosis, potentially due to binding of CDC2L1 and CDC2L2.