



#24330

Catalog Number: 24330-1, 24330-2

Amount: 50µg/50µl, 100µg/100µl

Swiss-Prot No. : O75496

Form of Antibody: Rabbit IgG in phosphate buffered saline (without Mg²⁺ and Ca²⁺), pH 7.4, 150mM NaCl, 0.02% sodium azide and 50% glycerol.

Storage/Stability: Store at -20°C/1 year

Immunogen: The antiserum was produced against synthesized peptide derived from Human GMNN

Purification: The antibody was affinity-purified from rabbit antiserum by affinity-chromatography using epitope-specific immunogen.

Specificity/Sensitivity: GMNN Antibody detects endogenous levels of total GMNN

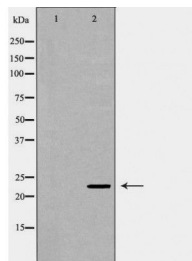
Reactivity: Human, Mouse, Rat

Applications:

Predicted MW: 23kd

WB: 1:500-2000

IHC: 1:50-200



Western blot analysis of extracts of various celllines, using GMNN antibody.

Background : This gene encodes a protein that plays a critical role in cell cycle regulation. The encoded protein inhibits DNA replication by binding to DNA replication factor Cdt1, preventing the incorporation of minichromosome maintenance proteins into the pre-replication complex. The encoded protein is expressed during the S and G2 phases of the cell cycle and is degraded by the anaphase-promoting complex during the metaphase-anaphase transition. Increased expression of this gene may play a role in several malignancies including colon, rectal and breast cancer. Alternatively spliced transcript variants have been observed for this gene, and two pseudogenes of this gene are located on the short arm of chromosome 16.