



EGFR (Phospho-Ser695) Antibody

#14163

Catalog Number: 14163-1, 14163-2

Amount: 50µg/50µl, 100µg/100µl

Swiss-Prot No. : P00533

Form of Antibody: Rabbit IgG in phosphate buffered saline (without Mg²⁺ and Ca²⁺), pH 7.4, 150mM NaCl, 0.02% sodium azide and 50% glycerol.

Storage/Stability: Store at -20°C/1 year

Immunogen: The antiserum was produced against synthesized phosphopeptide derived from Human EGFR around the phosphorylation site of Serine 693

Purification: The antibody was affinity-purified from rabbit antiserum by affinity-chromatography using epitope-specific immunogen.

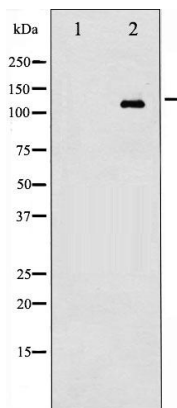
Specificity/Sensitivity: Phospho-EGFR(Serine 693) Antibody detects endogenous levels of EGFR only when phosphorylated at Serine 693

Reactivity: Human, Mouse, Rat

Applications:

Predicted MW: 135kd

WB: 1:500~1:2000



Western blot analysis of EGFR phosphorylation expression in 293 whole cell lysates, The lane on the left is treated with the antigen-specific peptide.

Background :

EGFR is a receptor tyrosine kinase. Receptor for epidermal growth factor (EGF) and related growth factors including TGF- α , amphiregulin, betacellulin, heparin-binding EGF-like growth factor, GP30 and vaccinia virus growth factor. Is involved in the control of cell growth and differentiation.