



EGFR (Phospho-Tyr1110) Antibody

#14158

Catalog Number: 14158-1, 14158-2

Amount: 50µg/50µl, 100µg/100µl

Swiss-Prot No. : P00533

Form of Antibody: Rabbit IgG in phosphate buffered saline (without Mg²⁺ and Ca²⁺), pH 7.4, 150mM NaCl, 0.02% sodium azide and 50% glycerol.

Storage/Stability: Store at -20°C/1 year

Immunogen: The antiserum was produced against synthesized phosphopeptide derived from Human EGFR around the phosphorylation site of Tyrosine 1110

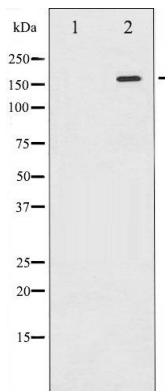
Purification: The antibody was affinity-purified from rabbit antiserum by affinity-chromatography using epitope-specific immunogen.

Specificity/Sensitivity: Phospho-EGFR(Tyrosine 1110)Antibody detects endogenous levels of EGFR only when phosphorylated at Tyrosine 1110

Reactivity: Human, Mouse, Rat

Applications:

Predicted MW: 175kd WB:1:500~1:2000 IHC:1:50-200



Western blot analysis of EGFR phosphorylation expression in EGF treated A431 whole cell lysates, The lane on the left is treated with the antigen-specific peptide.

Background :

EGFR is a receptor tyrosine kinase. Receptor for epidermal growth factor (EGF) and related growth factors including TGF- α , amphiregulin, betacellulin, heparin-binding EGF-like growth factor, GP30 and vaccinia virus growth factor. Is involved in the control of cell growth and differentiation.