



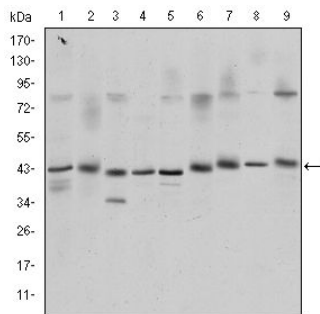
CREB1

Mouse monoclonal Antibody

#54052

Catalog Number: 54052**Amount:** 100µg/100µl**Swiss-Prot No. :** P16220**Form of Antibody:** Purified mouse monoclonal in buffer containing 0.1M Tris-Glycine (pH 7.4, 150 mM NaCl) with 0.2% sodium azide, 50% glycerol**Storage/Stability:** Store at -20°C/1 year**Immunogen:** Purified recombinant human CREB1 protein fragments expressed in E.coli**Purification:** affinity-chromatography**Specificity/Sensitivity:** This antibody detects endogenous levels of CREB1 and does not cross-react with related proteins**Reactivity:** Human, Monkey, Mouse, Rat**Applications:**

Predicted MW: 43kd WB:1:500-2000 IHC/ICC:1:200-1000



Western blot analysis using CREB1 mouse mAb against K562 (1), Jurkat (2), L1210 (3), HEK293 (4), A431 (5), HeLa (6), Cos7 (7), PC-12 (8), and NIH/3T3 (9) cell lysate.

Background:

This gene encodes a transcription factor that is a member of the leucine zipper family of DNA binding proteins. This protein binds as a homodimer to the cAMP-responsive element, an octameric palindrome. The protein is phosphorylated by several protein kinases, and induces transcription of genes in response to hormonal stimulation of the cAMP pathway. Alternate splicing of this gene results in two transcript variants encoding different isoforms.