



C-RAF Antibody

#24200

Catalog Number: 24200-1, 24200-2

Amount: 50µg/50µl, 100µg/100µl

Swiss-Prot No. : P04049

Form of Antibody: Rabbit IgG in phosphate buffered saline (without Mg²⁺ and Ca²⁺), pH 7.4, 150mM NaCl, 0.02% sodium azide and 50% glycerol.

Storage/Stability: Store at -20°C/1 year

Immunogen: The antiserum was produced against synthesized peptide derived from Human C-RAF

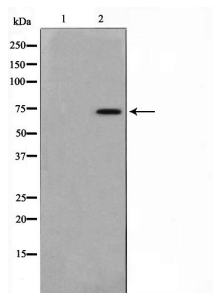
Purification: The antibody was affinity-purified from rabbit antiserum by affinity-chromatography using epitope-specific immunogen.

Specificity/Sensitivity: C-RAF Antibody detects endogenous levels of total C-RAF

Reactivity: Human, Mouse, Rat

Applications:

Predicted MW: 73kd WB: 1:500-2000



Western blot analysis on Jurkat cell lysate using C-RAF Antibody

Background :

Raf-1 is a MAP kinase kinase kinase (MAP3K) which functions downstream of the Ras family of membrane associated GTPases to which it binds directly. Once activated Raf-1 can phosphorylate to activate the dual specificity protein kinases MEK1 and MEK2 which in turn phosphorylate to activate the serine/threonine specific protein kinases ERK1 and ERK2. Activated ERKs are pleiotropic effectors of cell physiology and play an important role in the control of gene expression involved in the cell division cycle, apoptosis, cell differentiation and cell migration.