



ELAVL1

Antibody

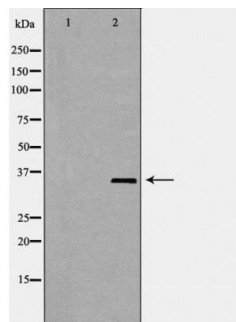
#24283

Catalog Number: 24283-1, 24283-2**Amount:** 50µg/50µl, 100µg/100µl**Swiss-Prot No. :**Q15717**Form of Antibody:** Rabbit IgG in phosphate buffered saline (without Mg²⁺ and Ca²⁺), pH 7.4, 150mM NaCl, 0.02% sodium azide and 50% glycerol.**Storage/Stability:** Store at -20°C/1 year**Immunogen:** The antiserum was produced against synthesized peptide derived from Human ELAVL1**Purification:** The antibody was affinity-purified from rabbit antiserum by affinity-chromatography using epitope-specific immunogen.**Specificity/Sensitivity:** ELAVL1 Antibody detects endogenous levels of total ELAVL1**Reactivity:** Human, Mouse, Rat**Applications:**

Predicted MW: 36kd

WB: 1:500-2000

IHC: 1:50-200



Western blot analysis of extracts of various celllines, using ELAVL1 antibody.

Background : The protein encoded by this gene is a member of the ELAVL family of RNA-binding proteins that contain several RNA recognition motifs, and selectively bind AU-rich elements (AREs) found in the 3' untranslated regions of mRNAs. AREs signal degradation of mRNAs as a means to regulate gene expression, thus by binding AREs, the ELAVL family of proteins play a role in stabilizing ARE-containing mRNAs. This gene has been implicated in a variety of biological processes and has been linked to a number of diseases, including cancer. It is highly expressed in many cancers, and could be potentially useful in cancer diagnosis, prognosis, and therapy.