



ENO2

Mouse monoclonal Antibody

#54068

**Catalog Number:** 54068**Amount:** 100µg/100µl**Swiss-Prot No. :** P09104**Form of Antibody:** Purified mouse monoclonal in buffer containing 0.1M Tris-Glycine (pH 7.4, 150 mM NaCl) with 0.2% sodium azide, 50% glycerol**Storage/Stability:** Store at -20°C/1 year**Immunogen:** Purified recombinant human ENO2 protein fragments expressed in E.coli**Purification:** affinity-chromatography**Specificity/Sensitivity:** This antibody detects endogenous levels of ENO2 and does not cross-react with related proteins**Reactivity:** Human, Mouse**Applications:**

Predicted MW: 47.3kd      WB:1:500-2000      IHC:1:50-200

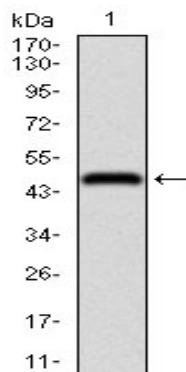


Figure 1: Western blot analysis using ENO2 mAb against human ENO2 recombinant protein. (Expected MW is 46 kDa)

### Background:

This gene encodes one of the three enolase isoenzymes found in mammals. This isoenzyme, a homodimer, is found in mature neurons and cells of neuronal origin. A switch from alpha enolase to gamma enolase occurs in neural tissue during development in rats and primates.