



EphA2

Mouse monoclonal Antibody

#54063

Catalog Number: 54063**Amount:** 100µg/100µl**Swiss-Prot No. :** P29317/29320/54764**Form of Antibody:** Purified mouse monoclonal in buffer containing 0.1M Tris-Glycine (pH 7.4, 150 mM NaCl) with 0.2% sodium azide, 50% glycerol**Storage/Stability:** Store at -20°C/1 year**Immunogen:** Purified recombinant human EphA2 protein fragments expressed in E.coli**Purification:** affinity-chromatography**Specificity/Sensitivity:** This antibody detects endogenous levels of EphA2 and does not cross-react with related proteins**Reactivity:** Human**Applications:**

Predicted MW: 120kd WB:1:500-2000 IHC:1:200-1000

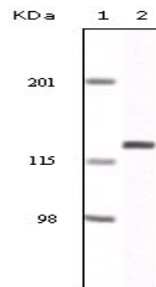


Figure 1: Western blot analysis using EphA2 mouse mAb against NIH/3T3 cell lysate.

Background:

EPH receptor A2 (EphA2), with 976-amino acid protein (about 107 kDa), belongs to the ephrin receptor subfamily of the protein-tyrosine kinase family. EphA1, EphA2, EphA3, EphA4, EphA5, EphA6, EphA7, EphA8, EphA10, EphB1, EphB2, EphB3, EphB4 and EphB6 are Eph family receptors for Ephrin family ligands. In normal cells, EphA2 negatively regulates cell growth and invasiveness. EphA2 is overexpressed by many human cancers, and is often associated with poor prognostic features. The clinical significance of the expression of EphA2 was observed in breast, prostate, colon, skin, cervical, ovarian, and lung cancers. EphA2 may serve as a novel target for bladder cancer, colonic adenocarcinoma and ovarian cancer therapy.