



## Dab1 Antibody

#24252

**Catalog Number:** 24252-1, 24252-2

**Amount:** 50µg/50µl, 100µg/100µl

**Swiss-Prot No. :** O75553

**Form of Antibody:** Rabbit IgG in phosphate buffered saline (without Mg<sup>2+</sup> and Ca<sup>2+</sup>), pH 7.4, 150mM NaCl, 0.02% sodium azide and 50% glycerol.

**Storage/Stability:** Store at -20°C/1 year

**Immunogen:** The antiserum was produced against synthesized peptide derived from Human Dab1

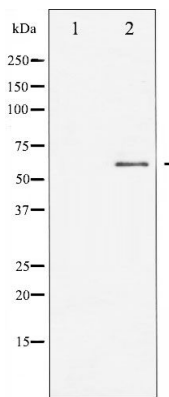
**Purification:** The antibody was affinity-purified from rabbit antiserum by affinity-chromatography using epitope-specific immunogen.

**Specificity/Sensitivity:** Dab1 Antibody detects endogenous levels of total Dab1

**Reactivity:** Human, Mouse, Rat

**Applications:**

Predicted MW: 60kd    WB: 1:500-2000    IF/ICC: 1:100-500



Western blot analysis of Dab1 expression in HepG2 whole cell lysates. The lane on the left is treated with the antigen-specific peptide.

**Background :**

DAB1 an adaptor molecule functioning in neural development. The laminar organization of multiple neuronal types in the cerebral cortex is required for normal cognitive function. In mice, the disabled-1 gene plays a central role in brain development, directing the migration of cortical neurons past previously formed neurons to reach their proper layer.