

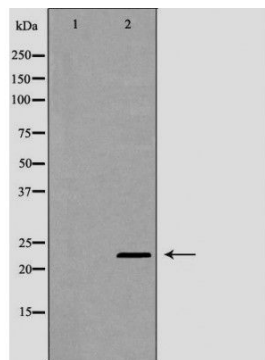


## CLDN3 Antibody

#24248

**Catalog Number:** 24248-1, 24248-2**Amount:** 50µg/50µl, 100µg/100µl**Swiss-Prot No. :** O15551**Form of Antibody:** Rabbit IgG in phosphate buffered saline (without Mg<sup>2+</sup> and Ca<sup>2+</sup>), pH 7.4, 150mM NaCl, 0.02% sodium azide and 50% glycerol.**Storage/Stability:** Store at -20°C/1 year**Immunogen:** The antiserum was produced against synthesized peptide derived from Human CLDN3**Purification:** The antibody was affinity-purified from rabbit antiserum by affinity-chromatography using epitope-specific immunogen.**Specificity/Sensitivity:** CLDN3 Antibody detects endogenous levels of total CLDN3**Reactivity:** Human, Mouse, Rat**Applications:**

Predicted MW: 23kd    WB: 1:500-2000    IHC: 1:50-200



Western blot analysis of extracts of HT-29 cell line, using CLDN3 antibody. | Immunohistochemistry of paraffin-embedded human cervical cancer tissue using CLDN3 antibody.

**Background :** Tight junctions represent one mode of cell-to-cell adhesion in epithelial or endothelial cell sheets, forming continuous seals around cells and serving as a physical barrier to prevent solutes and water from passing freely through the paracellular space. These junctions are comprised of sets of continuous networking strands in the outwardly facing cytoplasmic leaflet, with complementary grooves in the inwardly facing extracytoplasmic leaflet. The protein encoded by this intronless gene, a member of the claudin family, is an integral membrane protein and a component of tight junction strands. It is also a low-affinity receptor for Clostridium perfringens enterotoxin, and shares aa sequence similarity with a putative apoptosis-related protein found in rat.