



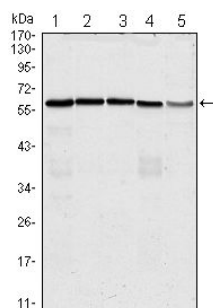
CDC25C

Mouse monoclonal Antibody

#54042

**Catalog Number:** 54042**Amount:** 100µg/100µl**Swiss-Prot No. :** P30307**Form of Antibody:** Purified mouse monoclonal in buffer containing 0.1M Tris-Glycine (pH 7.4, 150 mM NaCl) with 0.2% sodium azide, 50% glycerol**Storage/Stability:** Store at -20°C/1 year**Immunogen:** Purified recombinant human CDC25C protein fragments expressed in E.coli**Purification:** affinity-chromatography**Specificity/Sensitivity:** This antibody detects endogenous levels of CDC25C and does not cross-react with related proteins**Reactivity:** Human**Applications:**

Predicted MW: 58kd    WB:1:500-2000    IHC:1:200-1000



Western blot analysis using anti-CDC25C mAb against HeLa (1), K562 (2), PC-3 (3), HEK293 (4) and Raw264.7 (5) cell lysate.

### Background:

a member of the MPI phosphatase family. Activates the cyclin dependent kinase CDC2 by removing two phosphate groups and it is required for entry into mitosis. Shuttles between the nucleus and the cytoplasm due to nuclear localization and nuclear export signals. The protein is nuclear in the M and G1 phases of the cell cycle and moves to the cytoplasm during S and G2. CDC25B has oncogenic properties, although its role in tumor formation has not been determined. At least four transcript variants for this gene exist. Three splice variant isoforms have been described.