



APBB1 Antibody

#24159

Catalog Number: 24159-1, 24159-2

Amount: 50µg/50µl, 100µg/100µl

Swiss-Prot No. : O00213

Form of Antibody: Rabbit IgG in phosphate buffered saline (without Mg²⁺ and Ca²⁺), pH 7.4, 150mM NaCl, 0.02% sodium azide and 50% glycerol.

Storage/Stability: Store at -20°C/1 year

Immunogen: The antiserum was produced against synthesized peptide derived from Human APBB1

Purification: The antibody was affinity-purified from rabbit antiserum by affinity-chromatography using epitope-specific immunogen.

Specificity/Sensitivity: APBB1 antibody detects endogenous levels of total APBB1 protein

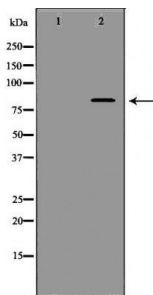
Reactivity: Human, Mouse, Rat

Applications:

Predicted MW: 77kd

WB: 1:500~1:2000

IHC: 1:50-200



Western blot analysis of extracts of various celllines, using RAD51 antibody.

Background : The protein encoded by this gene is a member of the Fe65 protein family. It is an adaptor protein localized in the nucleus. It interacts with the Alzheimer's disease amyloid precursor protein (APP), transcription factor CP2/LSF/LBP1 and the low-density lipoprotein receptor-related protein. APP functions as a cytosolic anchoring site that can prevent the gene product's nuclear translocation. This encoded protein could play an important role in the pathogenesis of Alzheimer's disease. It is thought to regulate transcription. Also it is observed to block cell cycle progression by downregulating thymidylate synthase expression. Multiple alternatively spliced transcript variants encoding different isoforms have been described for this gene.