



## ARC Antibody

#24134

**Catalog Number:** 24134-1, 24134-2

**Amount:** 50µg/50µl, 100µg/100µl

**Swiss-Prot No. :** O60936-2

**Form of Antibody:** Rabbit IgG in phosphate buffered saline (without Mg<sup>2+</sup> and Ca<sup>2+</sup>), pH 7.4, 150mM NaCl, 0.02% sodium azide and 50% glycerol.

**Storage/Stability:** Store at -20°C/1 year

**Immunogen:** The antiserum was produced against synthesized peptide derived from Human

**ARC Purification:** The antibody was affinity-purified from rabbit antiserum by affinity-chromatography using epitope-specific immunogen.

**Specificity/Sensitivity:** ARC antibody detects endogenous levels of total ARC protein

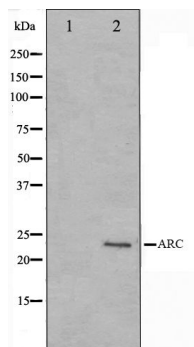
**Reactivity:** Human

**Applications:**

Predicted MW: 23kd

WB: 1:500~1:2000

IHC: 1:50-200



Western blot analysis on HeLa cell lysate using ARC Antibody

**Background :**

ARC Isoform 1 may be involved in RNA splicing. Interacts with TFPT. Isoform 1 oligomerizes and binds to SFRS9/SRp30C and also interacts with NPM1. Isoform 2 binds CASP2/caspase-2 and CASP8/caspase-8 and inhibits caspase-8 activity. 2 isoforms of the human protein are produced by alternative splicing.