

**SSTR2****Antibody**

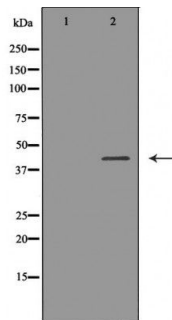
#24123

Catalog Number: 24123-1, 24123-2**Amount:** 50µg/50µl, 100µg/100µl**Swiss-Prot No. :** P30874**Form of Antibody:** Rabbit IgG in phosphate buffered saline (without Mg²⁺ and Ca²⁺), pH 7.4, 150mM NaCl, 0.02% sodium azide and 50% glycerol.**Storage/Stability:** Store at -20°C/1 year**Immunogen:** The antiserum was produced against synthesized peptide derived from Human SSTR2**Purification:** The antibody was affinity-purified from rabbit antiserum by affinity-chromatography using epitope-specific immunogen.**Specificity/Sensitivity:** SSTR2 antibody detects endogenous levels of total SSTR2 protein**Reactivity:** Human, Mouse, Rat**Applications:**

Predicted MW: 41kd

WB: 1:500~1:2000

IHC: 1:50-200



Western blot analysis of extracts of mouse thymus tissue lysate, using SSTR2 antibody.

Background :

Somatostatin acts at many sites to inhibit the release of many hormones and other secretory proteins. The biologic effects of somatostatin are probably mediated by a family of G protein-coupled receptors that are expressed in a tissue-specific manner. SSTR2 is a member of the superfamily of receptors having seven transmembrane segments and is expressed in highest levels in cerebrum and kidney.