



PMEPA1 Antibody

#24117

Catalog Number: 24117-1, 24117-2

Amount: 50µg/50µl, 100µg/100µl

Swiss-Prot No. : Q969W9

Form of Antibody: Rabbit IgG in phosphate buffered saline (without Mg²⁺ and Ca²⁺), pH 7.4, 150mM NaCl, 0.02% sodium azide and 50% glycerol.

Storage/Stability: Store at -20°C/1 year

Immunogen: The antiserum was produced against synthesized peptide derived from Human PMEPA1

Purification: The antibody was affinity-purified from rabbit antiserum by affinity-chromatography using epitope-specific immunogen.

Specificity/Sensitivity: PMEPA1 antibody detects endogenous levels of total PMEPA1 protein

Reactivity: Human

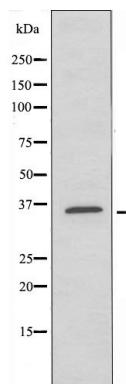
Applications:

Predicted MW: 37kd

WB:1:500~1:1000

IHC1:50:200

IF/ICC:1:100-500



Western blot analysis of extracts from HT-29 cells, using TMEPA antibody.

Background :
