



## STAT5A Antibody

#24111

**Catalog Number:** 24111-1, 24111-2

**Amount:** 50µg/50µl, 100µg/100µl

**Swiss-Prot No. :** P42229

**Form of Antibody:** Rabbit IgG in phosphate buffered saline (without Mg<sup>2+</sup> and Ca<sup>2+</sup>), pH 7.4, 150mM NaCl, 0.02% sodium azide and 50% glycerol.

**Storage/Stability:** Store at -20°C/1 year

**Immunogen:** The antiserum was produced against synthesized peptide derived from Human STAT5A

**Purification:** The antibody was affinity-purified from rabbit antiserum by affinity-chromatography using epitope-specific immunogen.

**Specificity/Sensitivity:** STAT5A antibody detects endogenous levels of total STAT5A protein

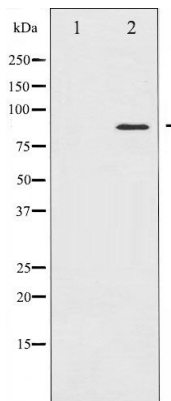
**Reactivity:** Human, Mouse, Rat

**Applications:**

Predicted MW: 90kd

WB: 1:500~1:2000

IHC: 1:50-200



Western blot analysis of STAT5A expression in 293 whole cell lysates, The lane on the left is treated with the antigen-specific peptide.

**Background :**

The protein encoded by this gene is a member of the STAT family of transcription factors. In response to cytokines and growth factors, STAT family members are phosphorylated by the receptor associated kinases, and then form homo- or heterodimers that translocate to the cell nucleus where they act as transcription activators.