



## WNK1 (Phospho-Thr58) Antibody

#14113

**Catalog Number:** 14113-1, 14113-2

**Amount:** 50µg/50µl, 100µg/100µl

**Swiss-Prot No. :** Q9H4A3

**Form of Antibody:** Rabbit IgG in phosphate buffered saline (without Mg<sup>2+</sup> and Ca<sup>2+</sup>), pH 7.4, 150mM NaCl, 0.02% sodium azide and 50% glycerol.

**Storage/Stability:** Store at -20°C/1 year

**Immunogen:** The antiserum was produced against synthesized phosphopeptide derived from Human WNK1 around the phosphorylation site of Threonine 58

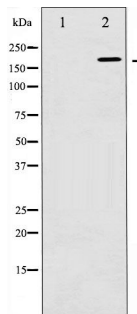
**Purification:** The antibody was affinity-purified from rabbit antiserum by affinity-chromatography using epitope-specific immunogen.

**Specificity/Sensitivity:** Phospho-WNK1 (Thr58) Antibody detects endogenous levels of WNK1 only when phosphorylated at Threonine 58

**Reactivity:** Human, Mouse, Rat

### Applications:

Predicted MW: 230kd      WB:1:500~1:2000      IHC:1:50-200



Western blot analysis of WNK1 phosphorylation expression in EGF treated 293 whole cell lysates, The lane on the left is treated with the antigen-specific peptide.

### Background :

WNK1 a serine-threonine protein kinase that controls sodium and chloride ion transport. May regulate the activity of the thiazide-sensitive Na-Cl cotransporter SLC12A3 by phosphorylation. May also play a role in actin cytoskeletal reorganization.