



#24104

Catalog Number: 24104-1, 24104-2

Amount: 50µg/50µl, 100µg/100µl

Swiss-Prot No. : Q16659

Form of Antibody: Rabbit IgG in phosphate buffered saline (without Mg²⁺ and Ca²⁺), pH 7.4, 150mM NaCl, 0.02% sodium azide and 50% glycerol.

Storage/Stability: Store at -20°C/1 year

Immunogen: The antiserum was produced against synthesized peptide derived from Human ERK3

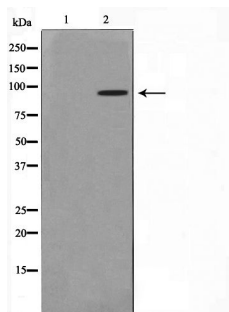
Purification: The antibody was affinity-purified from rabbit antiserum by affinity-chromatography using epitope-specific immunogen.

Specificity/Sensitivity: ERK3 antibody detects endogenous levels of total ERK3 protein

Reactivity: Human, Mouse, Rat

Applications:

Predicted MW: 85kd WB: 1:500~1:2000 IF/ICC: 1:100-500



Western blot analysis on mouse brain cell lysate using ERK3 Antibody

Background :

The protein encoded by this gene is a member of the Ser/Thr protein kinase family, and is most closely related to mitogen-activated protein kinases (MAP kinases). MAP kinases also known as extracellular signal-regulated kinases (ERKs), are activated through protein phosphorylation cascades and act as integration points for multiple biochemical signals. This kinase is localized in the nucleus, and has been reported to be activated in fibroblasts upon treatment with serum or phorbol esters.