



MAPK11 Antibody

#24101

Catalog Number: 24101-1, 24101-2

Amount: 50µg/50µl, 100µg/100µl

Swiss-Prot No. :Q15759

Form of Antibody: Rabbit IgG in phosphate buffered saline (without Mg²⁺ and Ca²⁺), pH 7.4, 150mM NaCl, 0.02% sodium azide and 50% glycerol.

Storage/Stability: Store at -20°C/1 year

Immunogen: The antiserum was produced against synthesized non-phosphopeptide derived from Human MAPK

Purification: The antibody was affinity-purified from rabbit antiserum by affinity-chromatography using epitope-specific immunogen.

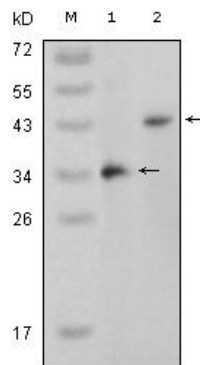
Specificity/Sensitivity: MAPK11 antibody detects endogenous levels of total MAPK protein

Reactivity: Human

Applications:

Predicted MW: 42 kd

WB:1:500~1:2000



Western blot analysis using MAPK11 mouse mAb against truncated MAPK11 recombinant protein (1) and full-length MAPK11 (aa1-363)-pcDNA3.1 transfected CHO-K1 cell lysate (2).

Background : The protein encoded by this gene is a member of the MAP kinase family. MAP kinases act as an integration point for multiple biochemical signals, and are involved in a wide variety of cellular processes such as proliferation, differentiation, transcription regulation and development. This kinase is most closely related to p38 MAP kinase, both of which can be activated by proinflammatory cytokines and environmental stress. This kinase is activated through its phosphorylation by MAP kinase kinases (MKKs), preferably by MKK6. Transcription factor ATF2/CREB2 has been shown to be a substrate of this kinase. Alternatively spliced transcript variants encoding the same protein have been observed.