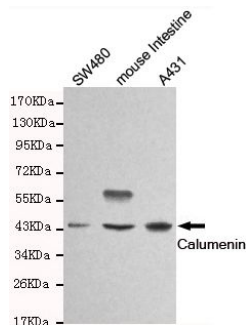




## Calumenin

### Mouse monoclonal Antibody

#53513

**Catalog Number:** 53513**Amount:** 100µg/100µl**Swiss-Prot No. :** O43852**Gene name:** calu**Gene id:** 813**Clone Number:** 4C6-G10-B12**Form of Antibody:** Purified mouse monoclonal in buffer containing 0.1M Tris-Glycine (pH 7.4, 150 mM NaCl) with 0.2% sodium azide, 50% glycerol**Storage/Stability:** Store at -20°C/1 year**Immunogen:** Purified recombinant human Calumenin protein fragments expressed in E.coli**Purification:** affinity-chromatography**Specificity/Sensitivity:** This antibody detects endogenous levels of Calumenin and does not cross-react with related proteins**Reactivity:** Human, Mouse**Applications:** Predicted MW: 37kd WB: 1:1000

Western blot detection of Calumenin in SW480, mouse intestine and A431 cell lysates and using Calumenin mouse mAb (1:1000 diluted). Predicted band size: 37KDa. Observed band size: 45KDa.

### Background:

The product of this gene is a calcium-binding protein localized in the endoplasmic reticulum (ER) and it is involved in such ER functions as protein folding and sorting. This protein belongs to a family of multiple EF-hand proteins (CERC) that include reticulocalbin, ERC-55, and Cab45 and the product of this gene. Alternatively spliced transcript variants encoding different isoforms have been identified.