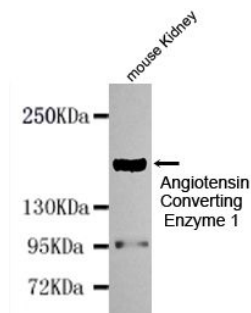




Angiotensin Converting Enzyme 1

Mouse monoclonal Antibody

#53148

Catalog Number: 53148**Amount:** 100µg/100µl**Swiss-Prot No. :** P12821**Gene name:** ace**Gene id:** 1636**Clone Number:** 4F3-E6-H8**Form of Antibody:** Purified mouse monoclonal in buffer containing 0.1M Tris-Glycine (pH 7.4, 150 mM NaCl) with 0.2% sodium azide, 50% glycerol**Storage/Stability:** Store at -20°C/1 year**Immunogen:** Purified recombinant human ACE1 protein fragments expressed in E.coli**Purification:** affinity-chromatography**Specificity/Sensitivity:** This antibody detects endogenous levels of ACE1 and does not cross-react with related proteins**Reactivity:** Mouse**Applications:** Predicted MW: 190kd WB: 1:1000

Western blot detection of Angiotensin Converting Enzyme 1 in Mouse kidney cell lysates using Angiotensin Converting Enzyme 1 mouse mAb (1:1000 diluted). Predicted band size: 150KDa. Observed band size: 190KDa.

Background:

This gene encodes an enzyme involved in catalyzing the conversion of angiotensin I into a physiologically active peptide angiotensin II. Angiotensin II is a potent vasopressor and aldosterone-stimulating peptide that controls blood pressure and fluid-electrolyte balance. This enzyme plays a key role in the renin-angiotensin system. Many studies have associated the presence or absence of a 287 bp Alu repeat element in this gene with the levels of circulating enzyme or cardiovascular pathophysiologies. Two most abundant alternatively spliced variants of this gene encode two isoforms - the somatic form and the testicular form that are equally active. Multiple additional alternatively spliced variants have been identified but their full length nature has not been determined.