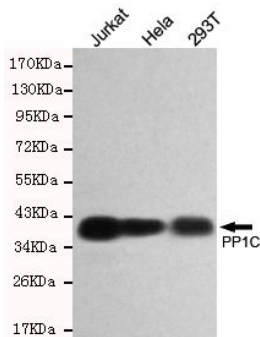




PP1C

Mouse monoclonal Antibody

#53551

Catalog Number: 53551**Amount:** 100µg/100µl**Swiss-Prot No. :** P36873**Gene name:** ppp1cc**Gene id:** 5501**Clone Number:** 2F2-A3-H10**Form of Antibody:** Purified mouse monoclonal in buffer containing 0.1M Tris-Glycine (pH 7.4, 150 mM NaCl) with 0.2% sodium azide, 50% glycerol**Storage/Stability:** Store at -20°C/1 year**Immunogen:** Purified recombinant human full length PP1C protein fragments expressed in E.coli**Purification:** affinity-chromatography**Specificity/Sensitivity:** This antibody detects endogenous levels of PP1C and does not cross-react with related proteins**Reactivity:** Human**Applications:** Predicted MW: 38kd WB: 1:500

Western blot detection of PP1C in HeLa, 293T and Jurkat cell lysates using PP1C mouse mAb (1:500 diluted). Predicted band size: 38KDa. Observed band size: 38KDa.

Background:

The protein encoded by this gene belongs to the protein phosphatase family, PP1 subfamily. PP1 is an ubiquitous serine/threonine phosphatase that regulates many cellular processes, including cell division. It is expressed in mammalian cells as three closely related isoforms, alpha, beta/delta and gamma, which have distinct localization patterns. This gene encodes the gamma isozyme. Alternatively spliced transcript variants encoding different isoforms have been found for this gene.