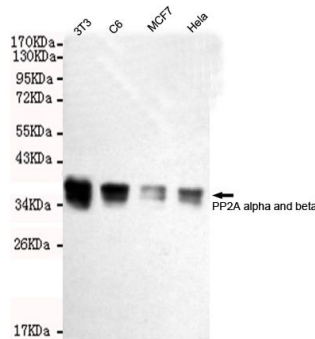


PP2A α,β

Mouse monoclonal Antibody

#53150

Catalog Number: 53150**Amount:** 100 μ g/100 μ l**Swiss-Prot No. :** P62714**Gene name:** ppp2cb**Gene id:** 5516**Clone Number:** 2G2-H6-G11-E8**Form of Antibody:** Purified mouse monoclonal in buffer containing 0.1M Tris-Glycine (pH 7.4, 150 mM NaCl) with 0.2% sodium azide, 50% glycerol**Storage/Stability:** Store at -20°C/1 year**Immunogen:** Purified recombinant human full length PP2A beta protein fragments expressed in E.coli**Purification:** affinity-chromatography**Specificity/Sensitivity:** This antibody detects endogenous levels of PP2A alpha and beta and does not cross-react with related proteins**Reactivity:** Human, Mouse, Rat**Applications:** Predicted MW: 36kd WB: 1:2000

Western blot detection of PP2A alpha and beta in HeLa, MCF7, C6 and 3T3 cell lysates using PP2A alpha and beta mouse mAb (1:2000 diluted). Predicted band size: 36KDa. Observed band size: 36KDa.

Background:

This gene encodes the phosphatase 2A catalytic subunit. Protein phosphatase 2A is one of the four major Ser/Thr phosphatases, and it is implicated in the negative control of cell growth and division. It consists of a common heteromeric core enzyme, which is composed of a catalytic subunit and a constant regulatory subunit, that associates with a variety of regulatory subunits. This gene encodes a beta isoform of the catalytic subunit.